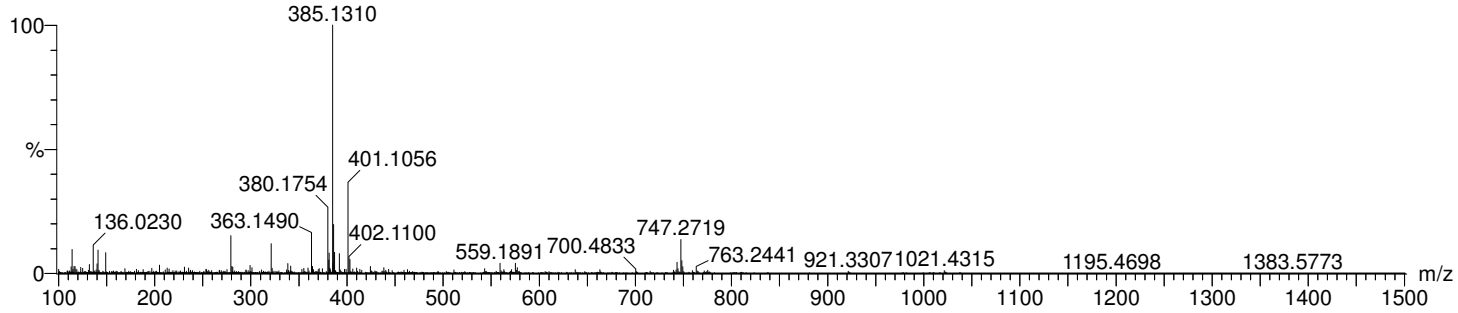


Single Mass Analysis

Tolerance = 5.0 PPM / DBE: min = -1.5, max = 120.0
Element prediction: Off
Number of isotope peaks used for i-FIT = 3

Monoisotopic Mass, Even Electron Ions
31 formula(e) evaluated with 1 results within limits (all results (up to 1000) for each mass)
Elements Used:
C: 6-16 H: 5-26 O: 0-7 Na: 0-1 S: 0-1
CyrMe2dimer
UNE BGreatrex CyrMe2dimer 169 (4.020) Cm (167:199)

1: TOF MS ES+
3.94e+005



Minimum: -1.5
Maximum: 55.0 5.0 120.0

Mass	Calc. Mass	mDa	PPM	DBE	i-FIT	i-FIT (Norm)	Formula				
385.1310	385.1297	1.3	3.4	3.5	425.1	0.0	C16	H26	O7	Na	S